



BLOCK F - FRONT ELEVATION

UNIT 37  
Total: 2277 sq. ft.

UNIT 36  
Total: 2280 sq. ft.

UNIT 35  
Total: 2280 sq. ft.

UNIT 34  
Total: 2239 sq. ft.

UNIT 33-G3  
Total: 2280 sq. ft.

UNIT 32  
Total: 2280 sq. ft.

UNIT 31  
Total: 2239 sq. ft.

UNIT 30  
Total: 2358 sq. ft.

Artist's Concept



Artist's Concept



**EXTERIOR DISCLAIMER**  
All drawings are an artist concept only, construction of dwelling may not be exactly as shown, rendering does not represent the colour package of individual blocks, exterior elevations. Renderings and sketches are subject to architectural controls and changes. The availability of materials to the Vendor during the construction of the dwelling, and site conditions may change. Some windows shown on side elevations may not be available due to side yard setbacks. As depicted in the floor plans and renderings certain windows are an architectural design feature and are not part of the living space. Accordingly, all details, dimensions, treatments, specifications and features shown may be changed by the Vendor, the municipality, the developer, or the Vendor's control architect, in their sole and unfeathered discretion at any time without notice. Steps and porches may vary at any exterior entrance way due to grading variance. Exterior colours, grading, windows, garage and entrance doors, landscaping, trees, fences, light poles, fire hydrants, transformers, mailboxes, etc., may vary from the renderings/site plan/site servicing and grading plans/lighting plans/etc. The purchase and sale agreement supersedes these artists' renderings. E. & O. E.

# BLOCK F

THREE-STOREY | EIGHT HOMES

68



BLOCK F - END UNIT 30

Artist's Concept



Artist's Concept



BLOCK F - REAR ELEVATION

UNIT 30

UNIT 31

UNIT 32

UNIT 33

UNIT 34

UNIT 35

UNIT 36

UNIT 37

Artist's Concept

69





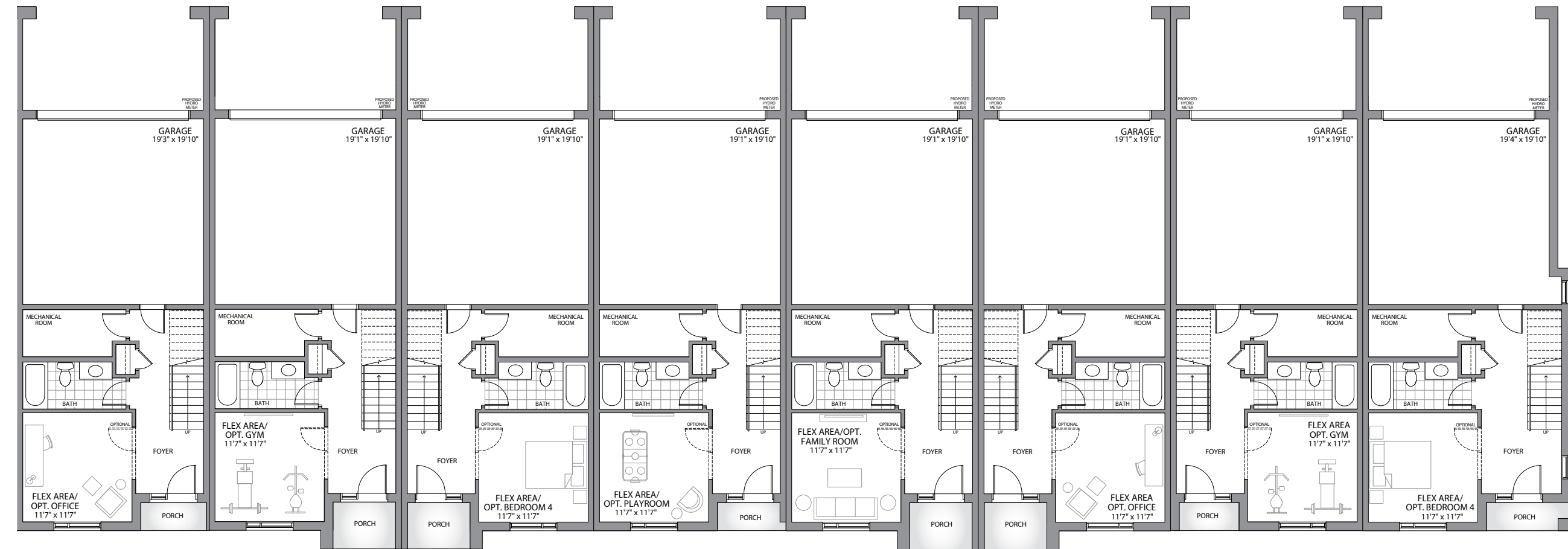
# BLOCK F

THREE-STOREY | EIGHT HOMES



SITE PLAN

## GROUND FLOOR



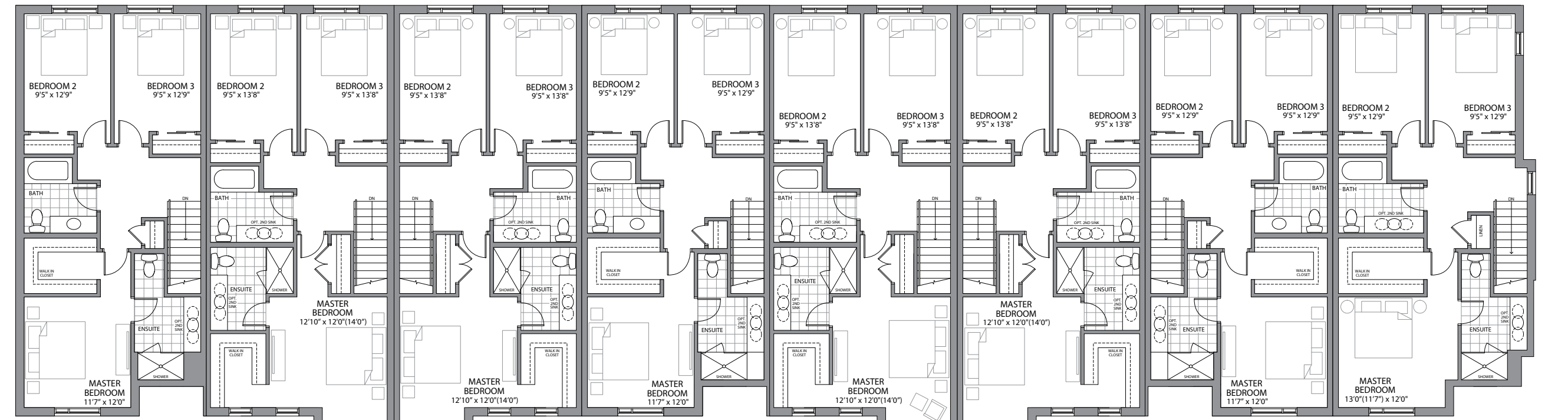
- UNIT 37-G2** Ground Floor - 475 sq. ft. Total: 2277 sq. ft.
- UNIT 36-G3** Ground Floor - 467 sq. ft. Total: 2280 sq. ft.
- UNIT 35-G3** Ground Floor - 467 sq. ft. Total: 2280 sq. ft.
- UNIT 34-G3** Ground Floor - 467 sq. ft. Total: 2239 sq. ft.
- UNIT 33-G3** Ground Floor - 467 sq. ft. Total: 2280 sq. ft.
- UNIT 32-G3** Ground Floor - 467 sq. ft. Total: 2280 sq. ft.
- UNIT 31-G3** Ground Floor - 467 sq. ft. Total: 2239 sq. ft.
- UNIT 30-G1** Ground Floor - 502 sq. ft. Total: 2358 sq. ft.

## SECOND FLOOR



- UNIT 37-S2** 2nd Floor: 901 sq. ft.
- UNIT 36-S3** 2nd Floor: 886 sq. ft.
- UNIT 35-S3** 2nd Floor: 886 sq. ft.
- UNIT 34-S3** 2nd Floor: 886 sq. ft.
- UNIT 33-S3** 2nd Floor: 886 sq. ft.
- UNIT 32-S3** 2nd Floor: 886 sq. ft.
- UNIT 31-S3** 2nd Floor: 886 sq. ft.
- UNIT 30-S1** 2nd Floor: 928 sq. ft.

## THIRD FLOOR



- UNIT 37-T2** 3rd Floor: 901 sq. ft.
- UNIT 36-T3** 3rd Floor: 927 sq. ft.
- UNIT 35-T3** 3rd Floor: 927 sq. ft.
- UNIT 34-T3.1** 3rd Floor: 886 sq. ft.
- UNIT 33-T3** 3rd Floor: 927 sq. ft.
- UNIT 32-T3** 3rd Floor: 927 sq. ft.
- UNIT 31-T3.1** 3rd Floor: 886 sq. ft.
- UNIT 30-T1** 3rd Floor: 928 sq. ft.

**INTERIOR DISCLAIMER**  
Materials, specifications and floor plans are subject to change without notice. Any and all flooring materials shown on the floor plans/brochures and interior renderings may not be standard flooring products or sizes included in the home. All stated or represented room measurements are approximate inside measurements. Actual usable floor space may vary from the stated floor area due to site conditions, engineering, structural requirements or city requirements. Individual room dimensions may vary. The floor area (known as square footage calculations) of the house is the total area of each floor above grade measured from the centerline of the common walls or to the exterior face of the outside walls, the methods and tolerances prescribed (outlined in) by Bulletin 22 by the Torion Warranty Corporation. Balconies may vary, plan shown in elevation only. Floorplans may change with elevations, orientation of unit may be reversed and purchaser agrees to accept the same. Construction of dwelling may not be exactly as shown. All units are sold unfurnished. Features identified as "optional" or "opt" are an additional cost and may not be available based on stage of construction of the home. Garage man doors into units are optional and may only be available if grading permits. Features shown "where grade permits" may not be available based on the grading of the land and may in some cases require an alternate location and adjacent floor areas to be sunken, number of steps in all entryways and porches may vary due to grade. As depicted in the floor plans certain windows are an architectural design feature and are not part of the living space. The location of features such as electrical panels, hot water tanks, sump pumps, furnaces or support posts and beams etc., may change due to site conditions or engineering requirements, mechanical wall encroachments, bulkheads or box outs may be required into finished rooms and garage spaces. The municipality, the developer, the Vendor's control architect, in their sole and unfettered discretion at any time without notice. The purchase and sale agreement supersedes these brochure drawings. E. & O. E.