




BLOCK E
 THREE-STOREY | SEVEN HOMES



UNIT 23 Total: 2121 sq. ft.	UNIT 24 Total: 2102 sq. ft.	UNIT 25 Total: 2079 sq. ft.	UNIT 26 Total: 2087 sq. ft.	UNIT 27 Total: 2079 sq. ft.	UNIT 28 Total: 2102 sq. ft.	UNIT 29 Total: 2428 sq. ft.
---------------------------------------	---------------------------------------	---------------------------------------	---------------------------------------	---------------------------------------	---------------------------------------	---------------------------------------



- Chef-inspired kitchens with thoughtfully-designed storage space
- Magnificent Quartz countertop
- Designer-selected flooring throughout

EXTERIOR DISCLAIMER
 All drawings are an artist concept only, construction of dwelling may not be exactly as shown, rendering does not represent the colour package of individual blocks, exterior elevations. Renderings and sketches are subject to architectural controls and changes. The availability of materials to the Vendor during the construction of the dwelling, and site conditions may change. Some windows shown on side elevations may not be available due to side yard setbacks. As depicted in the floor plans and renderings certain windows are an architectural design feature and are not part of the living space. Accordingly, all details, dimensions, treatments, specifications and features shown may be changed by the Vendor, the municipality, the developer, or the Vendor's control architect, in their sole and unfeathered discretion at any time without notice. Steps and porches may vary at any exterior entrance way due to grading variance. Exterior colours, grading, windows, garage and entrance doors, landscaping, trees, fences, light poles, fire hydrants, transformers, mailboxes, etc., may vary from the renderings/site plan/site servicing and grading plans/lighting plans/etc. The purchase and sale agreement supersedes these artists' renderings. E. & O. E.



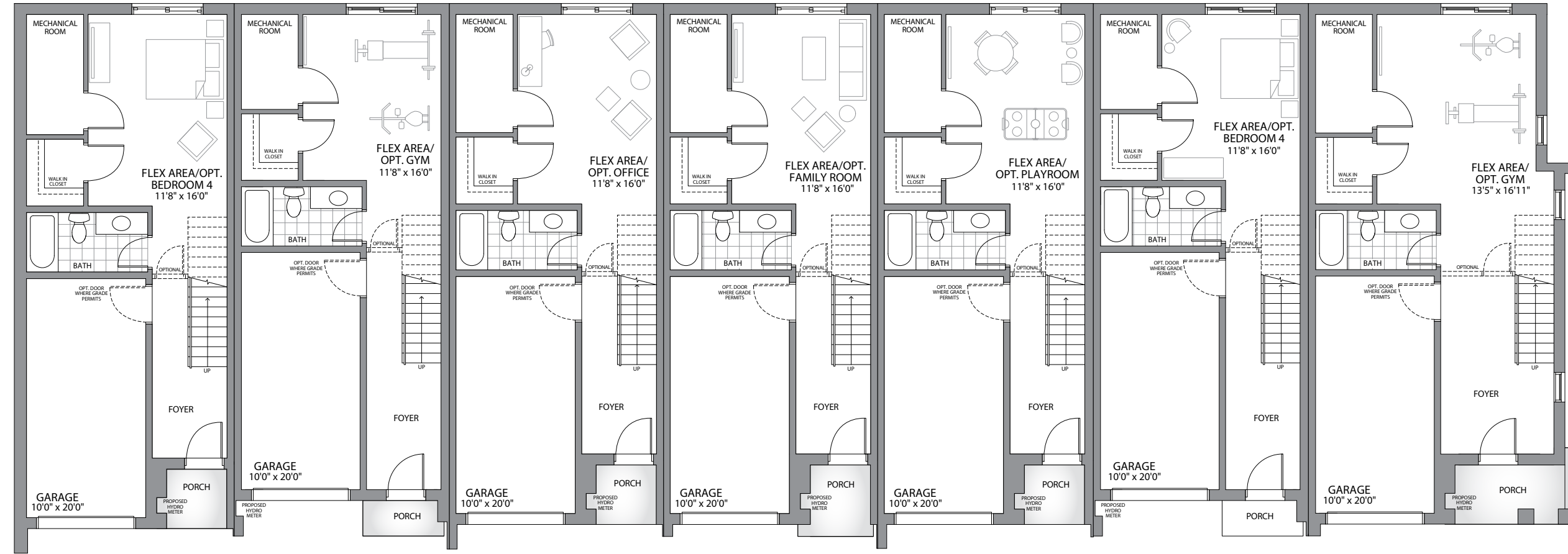
BLOCK E

TWO-STOREY | SEVEN HOMES



SITE PLAN

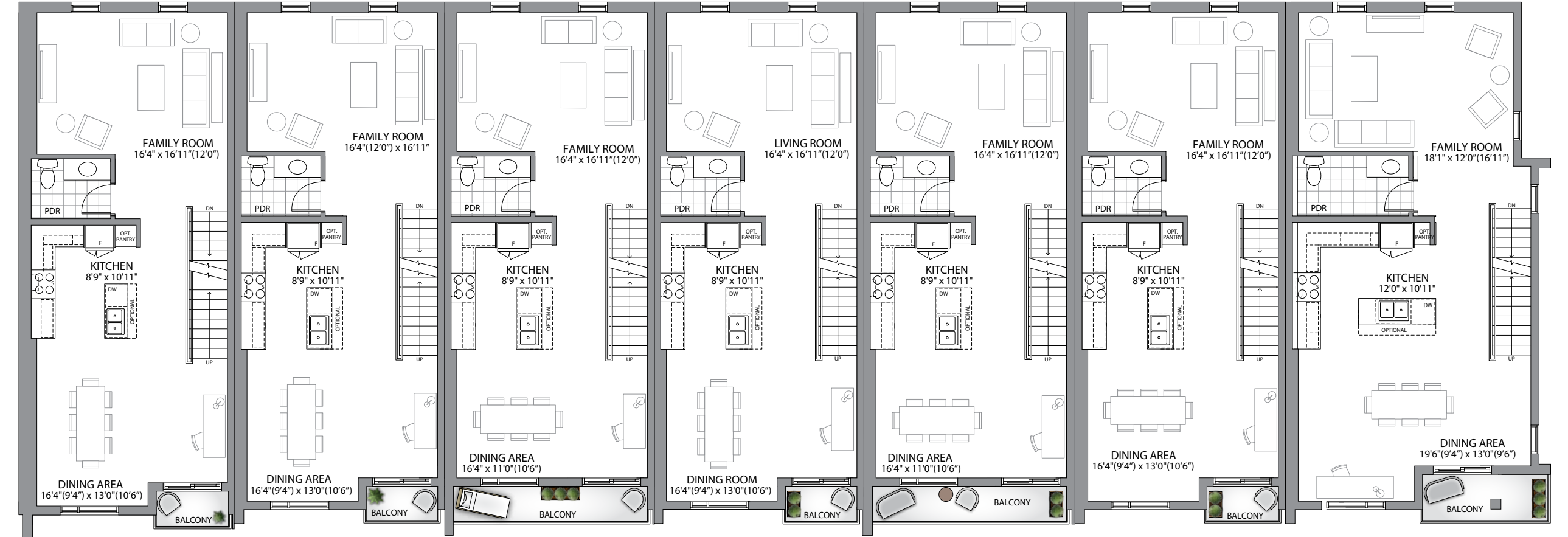
GROUND FLOOR



UNIT 23-G2.1 Ground Floor - 541 sq. ft. Total: 2121 sq. ft.	UNIT 24-G3.1 Ground Floor - 535 sq. ft. Total: 2102 sq. ft.	UNIT 25-G3.3 Ground Floor - 534 sq. ft. Total: 2079 sq. ft.	UNIT 26-G3.3 Ground Floor - 534 sq. ft. Total: 2087 sq. ft.	UNIT 27-G3.3 Ground Floor - 534 sq. ft. Total: 2079 sq. ft.	UNIT 28-G3.1 Ground Floor - 535 sq. ft. Total: 2102 sq. ft.	UNIT 29-G1.1 Ground Floor - 654 sq. ft. Total: 2428 sq. ft.
--	--	--	--	--	--	--

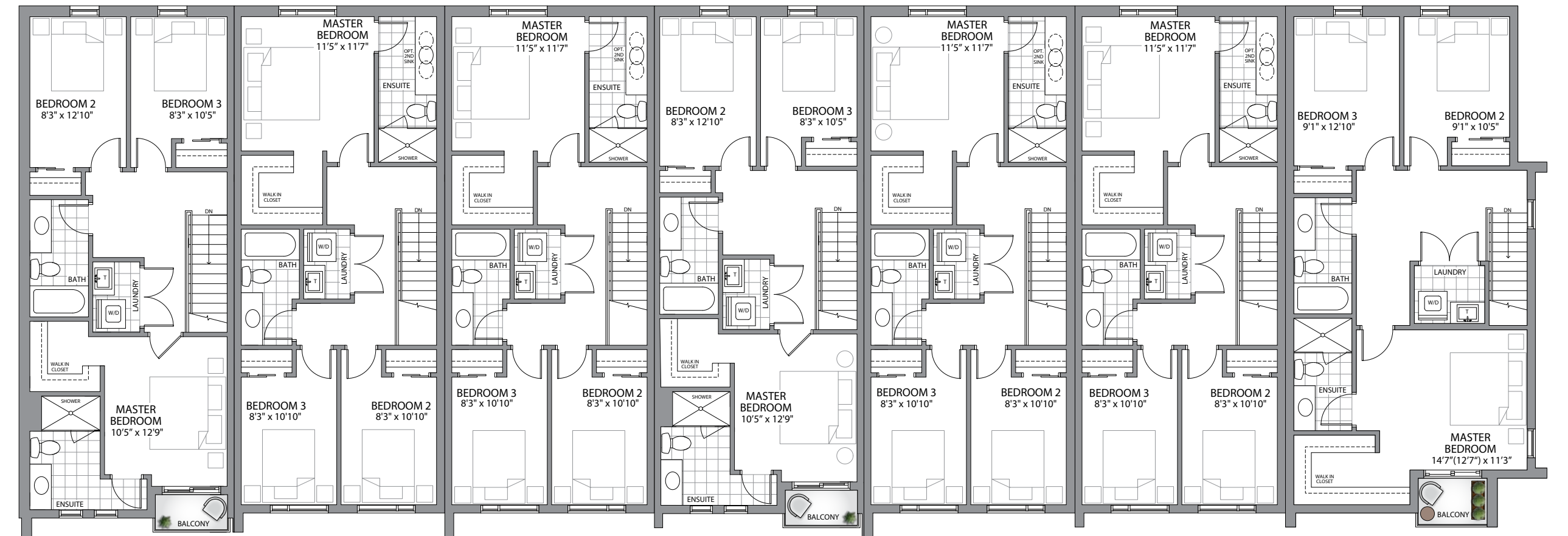
INTERIOR DISCLAIMER
Materials, specifications and floor plans are subject to change without notice. Any and all flooring materials shown on the floor plans/brochures and interior renderings may not be standard flooring products or sizes included in the home. All stated or represented room measurements are approximate inside measurements. Actual usable floor space may vary from the stated floor area due to site conditions, engineering, structural requirements or city requirements. Individual room dimensions may vary. The floor area (known as square footage calculations) of the house is the total area of each floor above grade measured from the centerline of the common walls or to the exterior face of the outside walls, the methods and tolerances prescribed (outlined in) by Bulletin 22 by the Tarian Warranty Corporation. Balconies may vary, plan shown in elevation only, floorplans may change with elevations, orientation of unit may be reversed and purchaser agrees to accept the same. Construction of dwelling may not be exactly as shown. All units are sold unfurnished. Features identified as "optional" or "opt" are an additional cost and may not be available based on stage of construction of the home. Garage man doors into units are optional and may only be available if grading permits. Features shown "where grade permits" may not be available based on the grading of the land and may in some cases require an alternate location and adjacent floor areas to be sunken, number of steps in all entryways and porches may vary due to grade. As depicted in the floor plans certain windows are an architectural design feature and are not part of the living space. The location of fixtures such as electrical panels, hot water tanks, sump pumps, furnaces or support posts and beams etc., may change due to site conditions or engineering requirements, mechanical wall encroachments, bulkheads or box outs may be required into finished rooms and garage spaces. The municipality, the developer, the Vendor's control architect, in their sole and unfettered discretion at any time without notice. The purchase and sale agreement supersedes these brochure drawings. E. & O. E.

SECOND FLOOR



UNIT 23-S2 2nd Floor: 790 sq. ft.	UNIT 24-S1.1 2nd Floor: 777 sq. ft.	UNIT 25-S3.2 2nd Floor - 755 sq. ft.	UNIT 26-S3.1 2nd Floor - 777 sq. ft.	UNIT 27-S3.2 2nd Floor - 755 sq. ft.	UNIT 28-S3.1 2nd Floor - 777 sq. ft.	UNIT 29-S1 2nd Floor - 887 sq. ft.
---	---	--	--	--	--	--

THIRD FLOOR



UNIT 23-T2.1 3rd Floor: 790 sq. ft.	UNIT 24-T4 3rd Floor: 790 sq. ft.	UNIT 25-T4 3rd Floor - 790 sq. ft.	UNIT 26-T3.1 3rd Floor - 776 sq. ft.	UNIT 27-T4 3rd Floor - 790 sq. ft.	UNIT 28-T4 3rd Floor - 790 sq. ft.	UNIT 29-T1 3rd Floor - 887 sq. ft.
---	---	--	--	--	--	--