





**BLOCK C**

THREE-STOREY  
EIGHT HOMES



- Spend quality time in the lower level family room
- Entertain guests around your kitchen island and in your elegant dining room
- Space to create a home office, studio or study area
- Dine al fresco on your own backyard patio



**EXTERIOR DISCLAIMER**  
All drawings are an artist concept only, construction of dwelling may not be exactly as shown, rendering does not represent the colour package of individual blocks, exterior elevations. Renderings and sketches are subject to architectural controls and changes. The availability of materials to the Vendor during the construction of the dwelling, and site conditions may change. Some windows shown on side elevations may not be available due to side yard setbacks. As depicted in the floor plans and renderings certain windows are an architectural design feature and are not part of the living space. Accordingly, all details, dimensions, treatments, specifications and features shown may be changed by the Vendor, the municipality, the developer, or the Vendor's control architect, in their sole and unfettered discretion at any time without notice. Steps and porches may vary at any exterior entrance way due to grading variance. Exterior colours, grading, windows, garage and entrance doors, landscaping, trees, fences, light poles, fire hydrants, transformers, mailboxes, etc., may vary from the renderings/site plan/site servicing and grading plans/lighting plans/etc. The purchase and sale agreement supersedes these artists' renderings. E. & O. E.





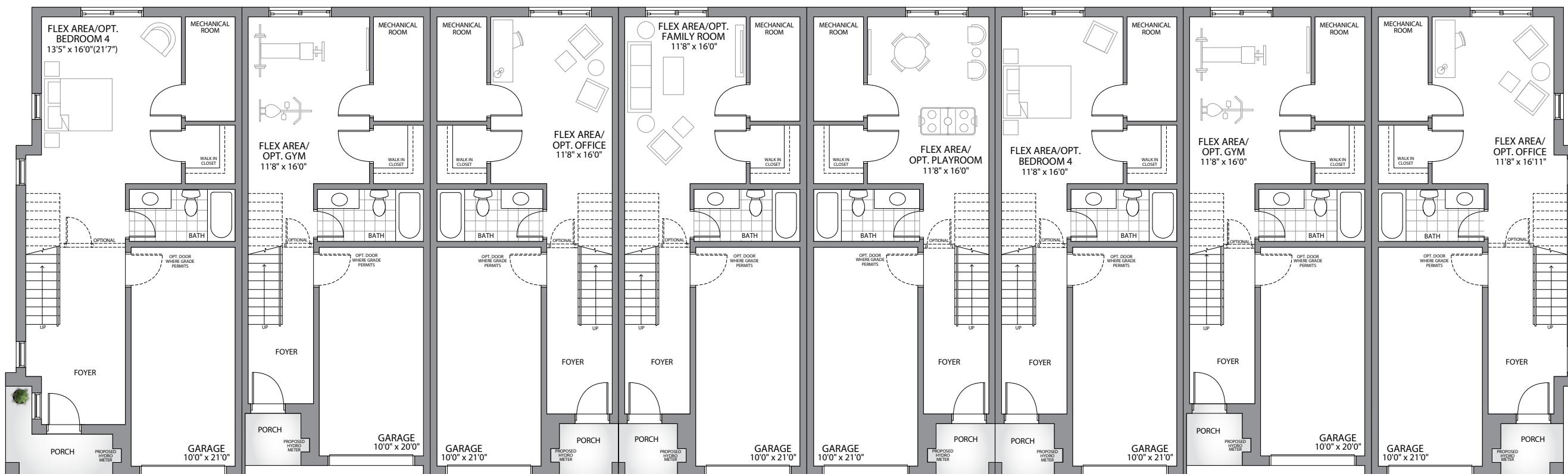
# BLOCK C

THREE-STOREY | EIGHT HOMES



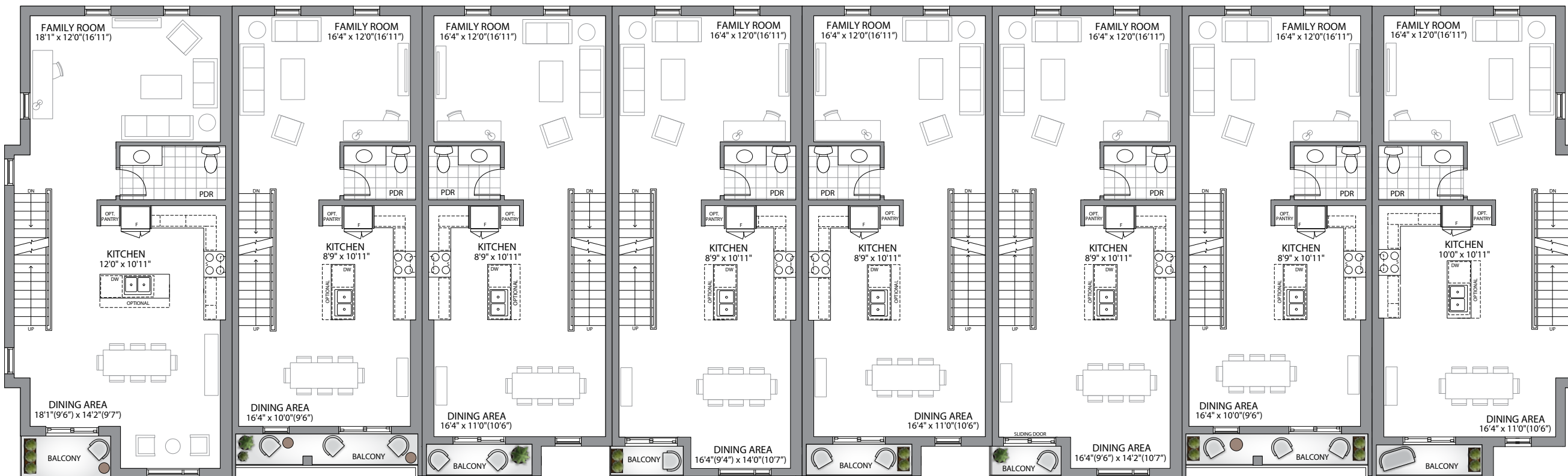
SITE PLAN

## GROUND FLOOR



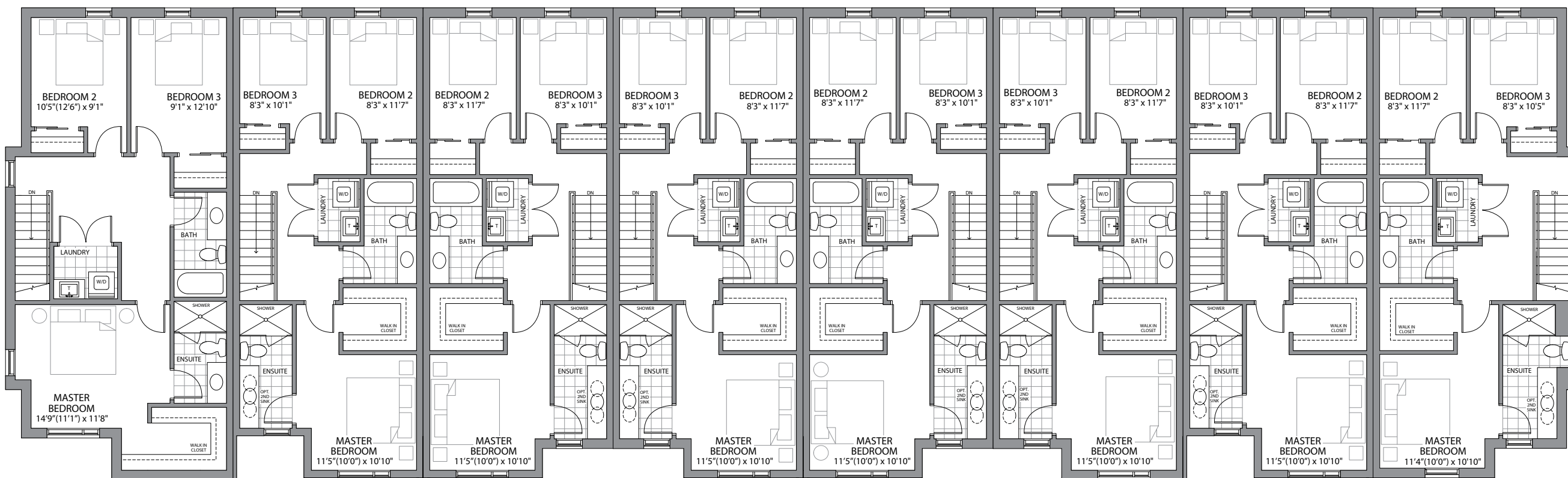
<b>UNIT 12-G1</b> Ground Floor - 669 sq. ft. Total: <b>2481 sq. ft.</b>	<b>UNIT 13-G3</b> Ground Floor - 534 sq. ft. Total: <b>2049 sq. ft.</b>	<b>UNIT 14-G3</b> Ground Floor - 541 sq. ft. Total: <b>2085 sq. ft.</b>	<b>UNIT 15-G3</b> Ground Floor - 541 sq. ft. Total: <b>2120 sq. ft.</b>	<b>UNIT 16-G3</b> Ground Floor - 541 sq. ft. Total: <b>2085 sq. ft.</b>	<b>UNIT 17-G3</b> Ground Floor - 541 sq. ft. Total: <b>2120 sq. ft.</b>	<b>UNIT 18-G3</b> Ground Floor - 534 sq. ft. Total: <b>2049 sq. ft.</b>	<b>UNIT 19-G1.2</b> Ground Floor - 584 sq. ft. Total: <b>2214 sq. ft.</b>
---	---	---	---	---	---	---	---

## SECOND FLOOR



<b>UNIT 12-S1</b> 2nd Floor: 905 sq. ft.	<b>UNIT 13-S3.3</b> 2nd Floor: 735 sq. ft.	<b>UNIT 14-S3.2</b> 2nd Floor: 755 sq. ft.	<b>UNIT 15-S3</b> 2nd Floor - 790 sq. ft.	<b>UNIT 16-S3.2</b> 2nd Floor - 755 sq. ft.	<b>UNIT 17-S3</b> 2nd Floor - 790 sq. ft.	<b>UNIT 18-S3.3</b> 2nd Floor - 735 sq. ft.	<b>UNIT 19-S1.3</b> 2nd Floor - 798 sq. ft.
---	---	---	--	--	--	--	--

## THIRD FLOOR



<b>UNIT 12-T1</b> 3rd Floor: 907 5sq. ft.	<b>UNIT 13-T3.1</b> 3rd Floor: 780 sq. ft.	<b>UNIT 14-T3</b> 3rd Floor: 789 sq. ft.	<b>UNIT 15-T3</b> 3rd Floor - 789 sq. ft.	<b>UNIT 16-T3</b> 3rd Floor - 789 sq. ft.	<b>UNIT 17-T3</b> 3rd Floor - 789 sq. ft.	<b>UNIT 18-T3.1</b> 3rd Floor - 780 sq. ft.	<b>UNIT 19-T1.1</b> 3rd Floor - 832 sq. ft.
--	---	---	--	--	--	--	--

INTERIOR DISCLAIMER

Materials, specifications and floor plans are subject to change without notice. Any and all flooring materials shown on the floor plans/brochures and interior renderings may not be standard flooring products or sizes included in the home. All stated or represented room measurements are approximate inside measurements. Actual usable floor space may vary from the stated floor area due to site conditions, engineering, structural requirements or city requirements. Individual room dimensions may vary. The floor area (known as square footage calculations) of the house is the total area of each floor above grade measured from the centerline of the common walls or to the exterior face of the outside walls, the methods and tolerances prescribed (outlined in) by Bulletin 22 by the Torion Warranty Corporation. Balconies may vary, plan shown in elevation only. Floorplans may change with elevations, orientation of unit may be reversed and purchaser agrees to accept the same. Construction of dwelling may not be exactly as shown. All units are sold unfurnished. Features identified as "optional" or "opt" are an additional cost and may not be available based on stage of construction of the home. Garage man doors into units are optional and may only be available if grading permits. Features shown "where grade permits" may not be available based on the grading of the land and may in some cases require an alternate location and adjacent floor areas to be sunken, number of steps in all entryways and porches may vary due to grade. As depicted in the floor plans certain windows are an architectural design feature and are not part of the living space. The location of fixtures such as electrical panels, hot water tanks, sump pumps, furnaces or support posts and beams etc., may change due to site conditions or engineering requirements, mechanical wall encroachments, bulkheads or box outs may be required into finished rooms and garage spaces. The municipality, the developer, the Vendor's control architect, in their sole and unfettered discretion at any time without notice. The purchase and sale agreement supersedes these brochure drawings. E. & O. E.